



Mercy Health

Care first

Your country haven



Shepparton Independent Living Units
Retirement living

mercyhealth.com.au

Location and lifestyle

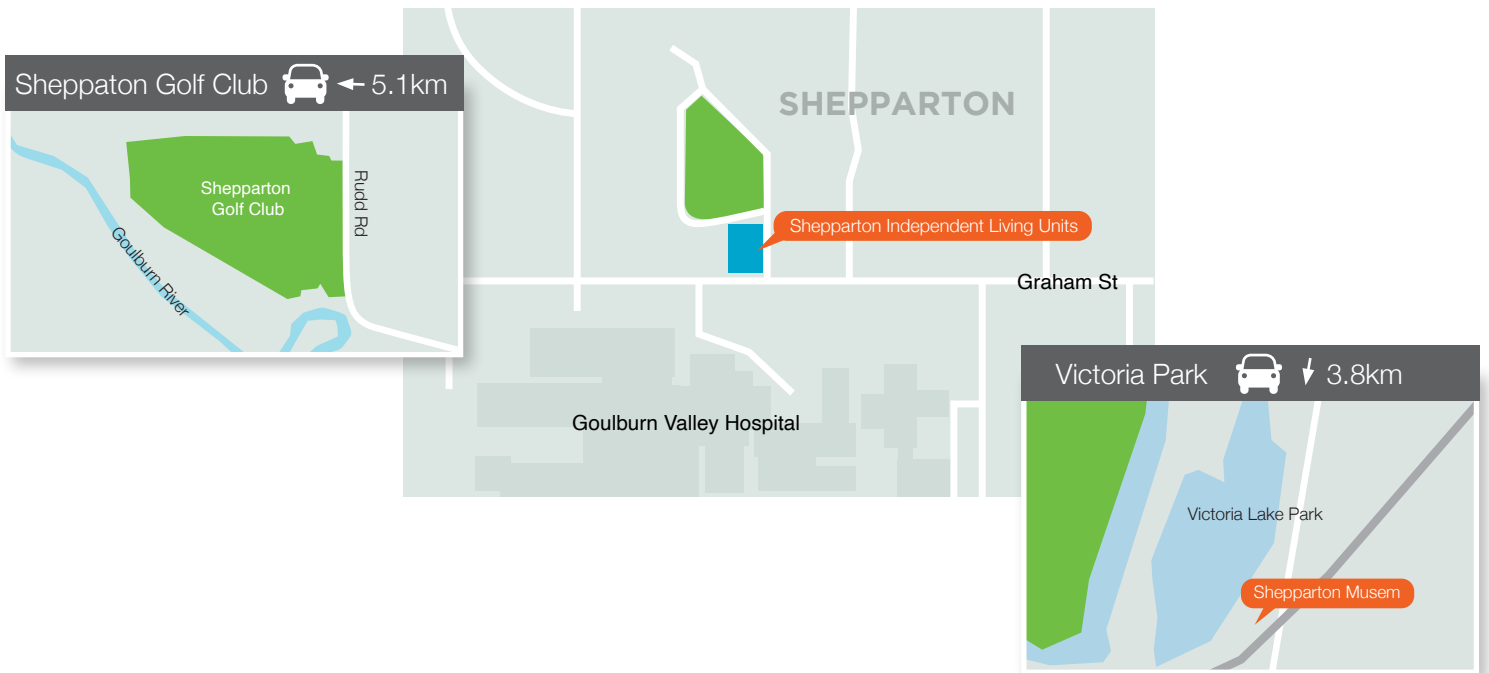
Welcome to Shepparton Independent Living Units: our friendly country community in the heart of Shepparton. Set within the lush surroundings of the Mercy Place Shepparton (Ave Maria) residential aged care home, our units offer private gardens and spacious living areas.

Only a six minute drive from the Shepparton town centre, you can enjoy close proximity to public transport, cinemas, shopping opportunities and the Shepparton Golf Club. The village is also on the doorstep of Goulburn Valley Health which hosts an emergency department, and a range of aged care and allied health services including physiotherapy and

podiatry.

Shepparton Independent Living Units is the perfect choice for those looking for a tranquil way of life, with all the privacy and independence you need. Entertain family or friends outdoors under the picturesque gazebo with BBQ facilities or take a leisurely stroll along the lake which is teeming with birdlife.

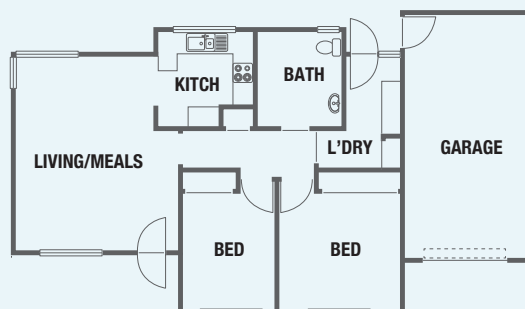
Residents at the village have access to the community centre, where they have the option of enjoying a monthly dinner together. A lifestyle activities program is also available for anyone to join in the fun.



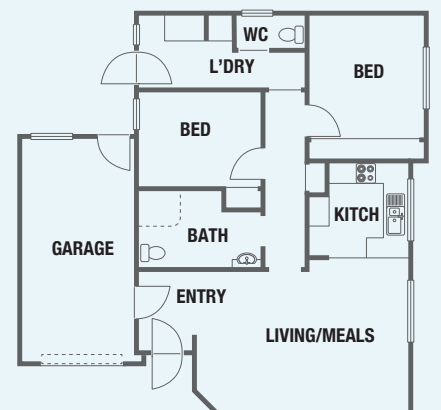
Floorplans

All units are spacious and comfortable, perfect for entertaining family and friends. Standard C units include an additional toilet. Executive A and C units include a study and some also have dedicated visitor parking.

Two bedrooms, Standard A



Two bedrooms, Standard C





Fixtures and finishes

The interior design of each unit offers a warm and neutral palette with quality fixtures and finishes, such as:

- electric cooking appliances
- dishwasher
- carpets and vinyl wood-look floors throughout
- ceiling fans (some units only)
- split system heating and cooling.

Everything is designed with your safety and convenience in mind.

The units

Features

Fifteen generous units are located throughout the village in two-bedroom configurations, with varied layouts. The central lake provides a charming outlook, designed for calm and serenity. A 24-hour emergency call system means you and your family can have peace of mind that help is on-hand if you ever need it.

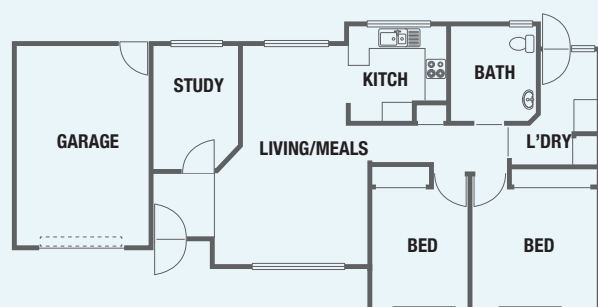
Each unit includes:

- open plan kitchen/dining/living
- separate bathroom with shower
- two toilets (some units only)
- laundry
- study (some units only)
- private courtyard.

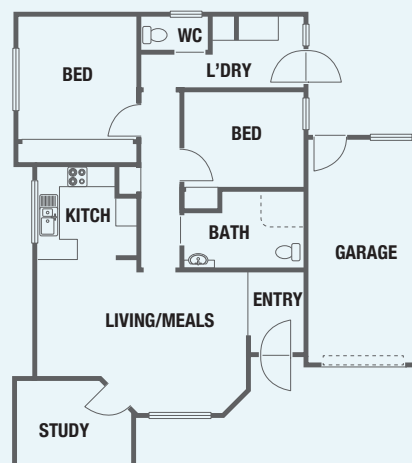
Each unit has its own allocated single garage. Some units have a dedicated visitor parking bay.



Two bedrooms, Executive A



Two bedrooms, Executive C





Healthy ageing with Mercy Health

Mercy Health wants to support people to live healthy and fulfilling lives that nourish their physical and mental wellbeing.

Shepparton Independent Living Units is designed to be a community. Enjoy a secure, independent and low-maintenance lifestyle, with the peace of mind that assistance and services are available if you need them, now or in future.

Mercy Health offers a full range of home care services for eligible residents to access.

We can provide:

- housekeeping and meal preparation
- shopping for essentials
- transport to appointments or social outings
- respite — providing support to family and other primary carers who need a break
- companionship
- personal care such as showering or dressing.

With Shepparton Independent Living Units and our residential aged care home side by side, this is a wonderful location for couples and a great support for families.



Mercy Health
Care first

Shepparton Independent Living Units

25 Graham Street, Shepparton Vic 3630

Phone: 03 5831 3000

retirement-living.mercyhealth.com.au



Mercy Health acknowledges Aboriginal and Torres Strait Islander Peoples as the First Australians. We acknowledge the diversity of Indigenous Australia. We respectfully recognise Elders past and present. This brochure was produced on Wurundjeri Country.



**Community
Reviewed**

Making
information
easier
to read.