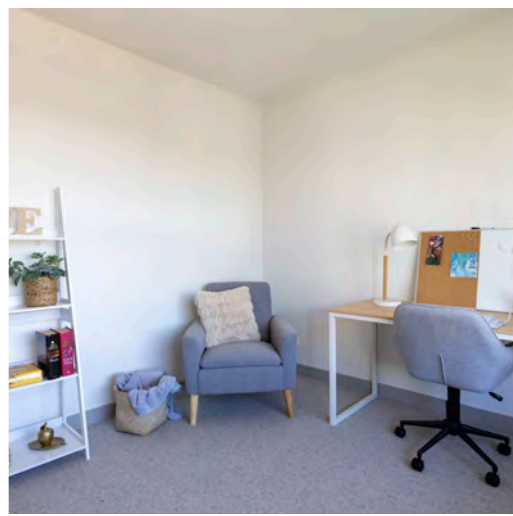
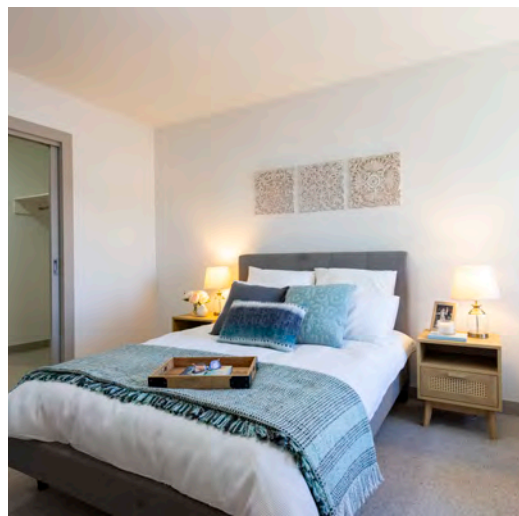




Mercy Health
Care first



Photos are for display purposes only. They may not be indicative of the actual apartment styling

Apartment Number 108

\$685,000

Features

2 Bedrooms | 1.5 Bathrooms | 1 Car space |
Total Area 105 Sqm

North-facing, this two-bedroom apartment is bathed in natural light and overlooks a lush, leafy private garden. Featuring an open-plan kitchen, dining, and living area, and a large, bright, and sunny balcony. A spacious master bedroom with walk in robes, a separate powder room, secure parking, and a large storage cage.

Your apartment includes:

- open plan kitchen/ living/ dining with quality fixtures and fittings including stainless steel european appliances, wall oven and dishwasher
- ensuite furnished with tiles, beautiful vanity and tapware
- powder room
- two toilets
- emergency call system
- allocated storage area.

