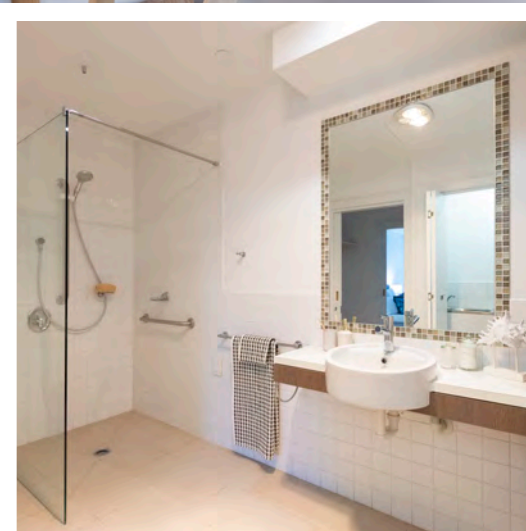
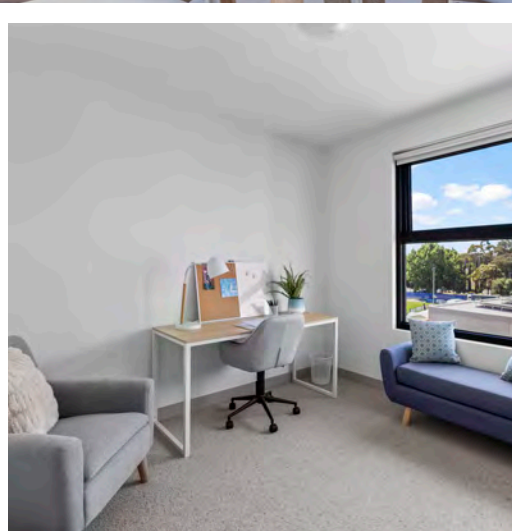
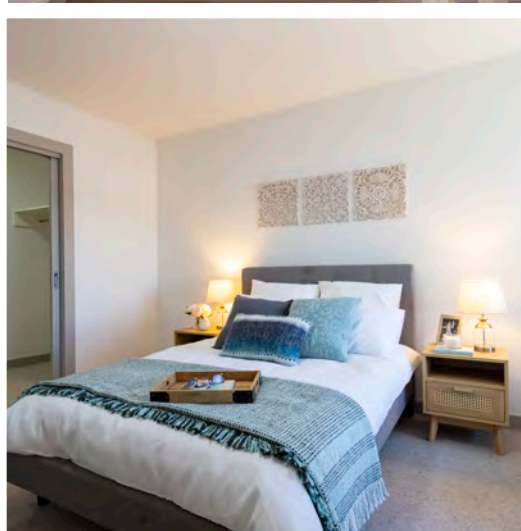




Mercy Health
Care first



Photos are for display purposes only. They may not be indicative of the actual apartment.

Apartment Number 311

\$755,000

Features

2 Bedrooms | 1.5 Bathrooms | 1 Car space |
Total Area 105 Sqm

Offering breathtaking panoramic city views, this apartment has a large private balcony. Featuring a spacious open-plan living and dining area, and a large master bedroom with walk in robes. Powder room, secure intercom entry, dedicated parking, a large storage cage, and an emergency call system.

Your apartment includes:

- open plan kitchen/ living/ dining with quality fixtures and fittings including stainless steel european appliances, wall oven and dishwasher
- ensuite furnished with tiles, beautiful vanity and tapware
- powder room
- two toilets
- emergency call system
- allocated storage area.

